

**ARTICLE**

Volume 1, Number 1, 2023 pp. 51-61

E-ISSN : 3025-2741

Doi:

## Character Values in Riko The Series Episode "Early Prayers of Time" for Elementary School Students

Intan Puspita Nurdiani <sup>1</sup>  | Syarip Hidayat <sup>2</sup>  | Pidi Mohamad Setiadi <sup>3</sup>  |

**Affiliation:**

Elementary School Teacher Education,  
Tasikmalaya Campus, Indonesian University  
of Education, Tasikmalaya, Indonesia

**Correspondence:**

Pendidikan Guru Sekolah Dasar Kampus  
Tasikmalaya , JL. Dadaha ,No.18 Kota  
Tasikmalaya, 46115 , Indonesia. Email:  
kampus\_tasikmalaya@upi.edu

**Funding information:****Abstract**

The development of the times makes it easier for children to access anything via the internet so it is not uncommon for children to imitate what they watch and affect the character they have. The film Riko The Series is one of the interesting animated films. For this reason, the purpose of this article is to analyze what character values are in the film Riko The Series which can be a medium for conveying moral values and character to elementary school-age children. This research uses a descriptive qualitative approach with the literature study method. The research results showed that the film Riko The Series contained various character values and produced 20 data in the episode studied by the author. The character values that emerged were religious character values found as many as 10 data, 1 data creative, 4 data curiosity, 2 data respecting achievement, 2 data responsibility, and 1 data discipline. Religious characters are characters that often appear in the animated film Riko The Series. This also shows that the animated film Riko The Series can be a medium for educational viewing for students and can also be used as a medium of learning that is rich in religious values and can be applied in lower grade elementary schools, especially in learning Islamic religious education.

**Keywords:** Animated Film, Riko The Series, Character Values, Elementary School Students

### 1. PENDAHULUAN

Character in human beings can determine the progress of a nation. Elementary school is the most basic education at the level of education in Indonesia, during elementary school age children have characteristics that are very sensitive to the surrounding environment and become the initial pinnacle of children to learn and develop character in themselves (Aida, 2018) .

The character values contained in educational units according to the provisions of the Ministry of National Education, namely originating from religion, Pancasila, culture and national education goals are (1) Religious which is an attitude and behavior that is obedient in implementing the teachings of the religion adhered to, has tolerance for the implementation of other religious worship and lives side by side in harmony with adherents of other religions without discriminating, (2) Honest which is behavior based on efforts to

make oneself a person who can be trusted in words because uttering facts, as well as in actions and work, (3) Tolerance is an act of respecting differences in religion, ethnicity, ethnicity, opinions, attitudes, and actions of other people who are different from themselves, (4) Discipline is an act that shows orderly and obedient behavior to various provisions and regulations, (5) Hard work is a behavior that shows genuine effort in overcoming various obstacles from learning and assignments and completes tasks or obligations seriously and as well as possible, (6) Creative is a way of thinking and doing something that produces a new way or result from what has been owned before, (7) Independent is a character one who is easy does not easily depend on others in carrying out his duties, (8) Democratic is a character value that has a way of thinking, behaving or exercising rights and obligations from himself and for others, (9) Curiosity is a character value that

always seeks to know deeper than what is learned, seen, heard so as to increase his understanding, (10) National Spirit is a character value that is a way of thinking, acting and insight that places the interests of the nation and state above personal or other people's interests, (11) Love of the Motherland is a character of thinking, behaving and acting that shows high loyalty and concern for the homeland or Indonesia, (12) Appreciating Achievement or Rewarding Achievement is an attitude or behavior that encourages him to produce something for others and acknowledges and respects the success of others, (13) Friendly / Communicative is a behavior that shows pleasure in talking, communicating and collaborating with others, (14) Peaceful Love is an attitude of speech and behavior that causes other people to feel at peace with their presence, (15) Likes to Read is a willingness to provide or free time to reading various literature that provides new knowledge, (16) Caring for the Environment an attitude or action that always seeks to protect and preserve the environment in the natural surroundings and produce solutions to repair the damage to nature that has occurred, (17) Social Care is a behavior and attitude that wants to provide assistance to people around or the community who are in need, (18) Responsibility is the action and attitude of a person to carry out the duties and obligations that he should have done for himself, society, environment, country and God Almighty. (Kemendiknas, 2011) .

Character is influenced by various factors, one of which is the environment, when children are in a good environment, children tend to have good character and vice versa. (Putry, 2018) .

In this modern era, children's characters can easily change because they can get information from anywhere with just one grip, it is possible that they can also easily access the videos they want to watch so that children can easily also watch shows that are not intended for their age. There are many cases in Indonesia which are caused by the impact of choosing the wrong shows that damage the character of elementary school children, for example the case of mistreatment of elementary school students in Bukit Tinggi, this is caused by the consumption of daily shows that contain

elements of violence, which has a negative impact.

Not all shows are good for consumption by children at elementary school age, this is due to the psychological factors of a child who cannot distinguish between positive and negative things. (Sari & Nugroho, 2022) . Good impressions can be used as a medium for conveying positive things for children, especially for the formation of character values that exist in them. Film is a visual communication medium and a means of conveying ideas in the form of moving images and is able to visualize various characters in human beings. These ideas can be in the form of entertainment or educational information. (Wulandari & Kusmarwanti, 2022). Animated films are one of the interesting shows that children really like, generally children will imitate what they see. Animated film is one of the films that promotes virtual imagination by using moving images to present a character that can be absorbed as meaningful information (Asmawati.L, 2020) Not only as entertainment, animated films can be character education media that will be very easily accepted by children.

Research on animated films has been researched by Ahmad Hariandi, et al with the research title "Moral Analysis In The Animated Films Of Nusa Rara And Upin Ipin As Educational Shows", This research is included in the type of qualitative descriptive research using sample titles from the animated film Nussa Rara and Upin Ipin cartoons with content analysis techniques. From this study, the results obtained were religious and moral values in the form of adab before going to bed, eating manners, saying basmallah, almsgiving, maintaining cleanliness, doing good deeds, tolerance and helping each other, not being arrogant, keeping one's words, praying on time, brotherhood, honesty, loving animals, respect, responsibility, justice, tolerance, wisdom, self-discipline, caring for others, cooperation, courage, and democracy. Nussa Rara animation and Upin Ipin cartoons are highly recommended for children to continue watching because they contain a lot of religious and moral values according to the nation's culture and the Islamic religion. (W. Rahmayanti, Hariandi, & Wati, 2020)

Apart from the animated films *Nusa* and *Rara* as well as *Upin and Ipin* which are popular among children, there is also an animated film *Riko The Series* which is an animated film that is rich in educational value. This animated series is targeted at children aged 7 to 15 years, with the main character *Riko* aged 8 years being described as a child who has a cheerful figure and has great curiosity making *Riko* want to explore new things. (R. D. Rahmayanti, Yarno, & Hermoyo, 2021) *Riko's* daily life becomes an adventure for *Riko* and his best friend *Q110*, a sophisticated robot that accompanies *Riko* to discover and learn about things around him, *Riko* is an 8 year old child who is always curious about new things that he doesn't know yet, animation film makers deliberately reinforce *Riko's* curious character by depicting it through a question mark-shaped hair icon, when *Riko* is curious her hair will form a question mark, when *Riko's* hair stands up it makes *Riko* curious, then *Q110* will give a clear answer to *Riko*, *Q110* provides an explanation in a unique way with an LCD screen and a projector that will appear from its body, the screen provides an explanation to *Riko* in a language that is easy for *Riko* to digest, besides that, the animation shown attracts children's attention because of its attractive design. In the story *Riko* is not only accompanied by *Q110* but also accompanied by the characters *Riko's* father, *Riko's* mother, and also *Kak Wulan* who is *Riko's* older sister. (R. D. Rahmayanti et al., 2021)

The *Riko The Series* film can be easily accessed on the *Riko The Series* Youtube Channel and currently has 3 seasons. The animated film *Riko The Series* is an animated children's series created by *Teuku Wisnu*, *Arie Untung* and *Yuda Wirafianto* and produced by *Garis Ten*. This animated film has a duration of around 4-8. With the presence of children's characters in it, it will make the story fit real life and it is hoped that it can become a real example for children in instilling character values that are appropriate to the child's age development.

Therefore, this animated film is one of the topics that the author wants to raise to analyze the values of any characters in the animated film *Riko The Series*, in this case the author chose an episode in season 3 entitled

"*Sholat Early Time*" which can be a medium for conveying moral values and character to elementary school-aged children. The character values that will become a reference or guideline for researchers include the 18 character values contained in the Guide to Implementation of Character Education in Schools by the Ministry of National Education. Through a literature review, the author conducted an analysis of the character values contained in the film "*Early Prayer of Time*". Because there are no results of the character value analysis of the episode.

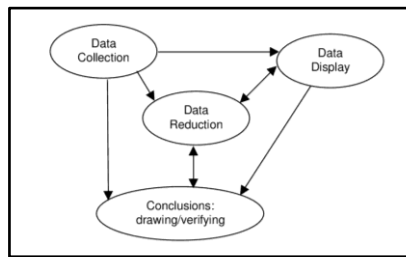
## 2. METODE

This study uses a qualitative approach that produces data in the form of sentences or pictures (Sugiyono, 2013). In other words, the researcher explains what is being studied with the support of literature studies and then strengthens other supporting references, so that later the results of the researcher's analysis will be obtained in the form of a conclusion. In this case the researcher analyzed the character values contained in the animated film *Riko The Series*. The researcher used a guideline of 18 character values which were the result of an empirical study by the Center for Curriculum of the Research and Development Agency of the Ministry of National Education to analyze the film.

The data source used by researchers uses secondary data, namely data that does not directly provide data to data collectors (Sugiyono, 2013) The data sources used are in the form of documents such as books, journals, previous research and other references that support research.

The object of research in this research is the film *Riko The Series* Season 3 episode "*Early Prayer of Time*". While the research subjects in this study consisted of related references.

Data was collected using literature study and analyzed using qualitative data techniques according to *Miles and Huberman*. The stages of data analysis are described as follows:



**Figure 1. Miles and Huberman Model Data Analysis Techniques**

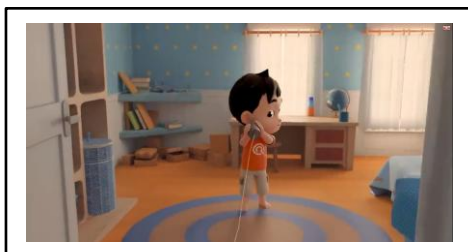
From the picture it can be concluded that there are three activities in the form of data reduction, data presentation and drawing conclusions. The final result of the data analysis in this study is in the form of conclusions regarding the character values contained in the Riko The Series Season 3 film in the episode "Early Prayer of Time"

### 3. RESULTS AND DISCUSSION

#### Result

There are several character values contained and found in the animated film Riko The Series in episodes 9-15 which have been analyzed by the writer. These character values are analyzed based on the indicators of each character developed in the education unit (Kemendiknas, 2011).

#### a. Scene 1



**Figure 2. Riko The Series "Early Prayers" minute – 01.02**

In the image above Riko and Q100 build a can phone then try to use it. The character value in this scene is a creative character value because Riko and Q110 used goods can turn them into toys that they can use to play as well as interesting toys.

#### b. Scene 2



**Figure 3. Screening of the film Riko The Series "Early Prayer of Time" minute – 01.04**

The character value depicted in the story is the value of the character appreciating achievement, because in that scene Riko also has a sentence indicating that there is a character appreciating achievement when Riko speaks to Q110 "Wow cool! We can only talk through cans" where the phrase "Wow is cool" is a compliment.

#### c. Scene 3



**Figure 4. Screening of the film Riko The Series "Early Prayer of Time" minute – 01.11**

The picture illustrates Riko who is so curious because the sound coming from the can is so clear. Riko's behavior shows the Character Value of Curiosity, this is also reinforced by Riko's words to Q110 "Qioo, Qioo's voice is clear. How could that be?" where is the sentence "How come?" is a sentence that contains questions and curiosity that is owned by Riko.

#### d. Scene 4

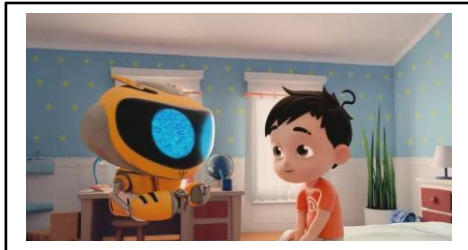


**Figure 5. Riko The Series "Early Prayers" minute – 02.05**

In that scene Riko rests on the bed after finishing playing with Q110, but at that hour it will soon be midday prayer time so Q110 reminds Riko not to sleep " "Hey Riko, it's going

to be prayer time soon. It's good that Riko doesn't sleep. Later it can be too late. The character values in the scene contain religious character values because Q110 invites Riko to fulfill the obligation to pray.

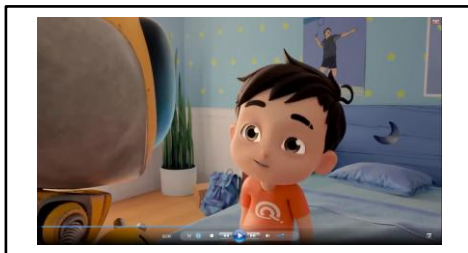
e. Scene 5



**Figure 6. Riko The Series "Early Prayers" minute – 02.21**

In this scene, Q110 reminds Riko so that he doesn't miss the prayer on time. Q110's dialog in the scene is "Hey Riko, it's time to start the prayer soon. It's good that Riko doesn't sleep. It might be too late." The scene contains the value of Responsibility, because Q110 invites Riko to obey obligations.

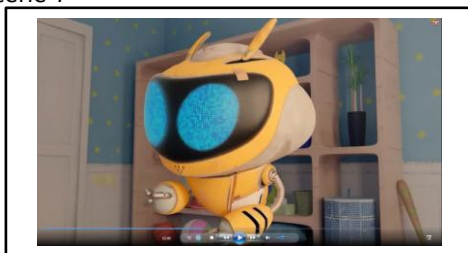
f. Scene 6



**Figure 7. Screening of the film Riko The Series "Early Prayer of Time" minute – 02.29**

In that scene Riko says "InsyaAllah, how come it's rushed", the sentence "InshaAllah" is a sentence that contains a Religious character value, because InsyaAllah is a sentence which means With Allah's Permission, meaning that Riko always remembers Allah when he says something.

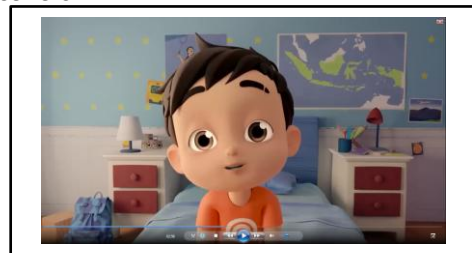
g. Scene 7



**Figure 8 . Riko The Series movie "Early Prayer of Time" minutes – 02.30**

In this scene, Q110 explains to Riko how important it is to pray on time and try to always do it at the start because Allah is pleased with people who can keep prayer times. The character value that can be drawn from the scene is a religious value because Q110 invites Riko to be obedient in carrying out the teachings of the religion he adheres to.

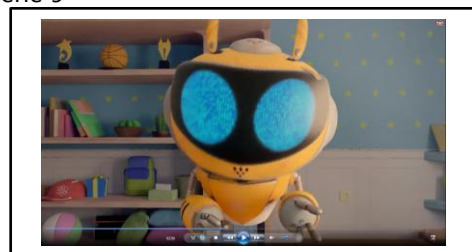
h. Scene 8



**Figure 9 . Riko The Series movie "Early Prayer of Time" minutes – 02.40**

In the picture Riko feels curious what if someone postpones the prayer, then Riko asks "What if we postpone the prayer?" . The character value that can be drawn from the conversation is the character of curiosity, because in that scene Riko feels curious and wants to know in depth by asking questions to Riko.

i. Scene 9



**Figure 10 . Screening of the film Riko The Series "Early Prayer of Time" minute – 02.59**

In this scene, Q110 re-explains to Riko the importance of praying on time and not delaying prayer. The dialogue in the film is as follows "Yes, of course God doesn't like it, Riko. Because often, the prayer is postponed, often forgotten and overdue. What if Allah is angry? Hihi" The values contained in the scene are Religious Values, namely when Q110 reminds Riko to pray on time.

j. Scene 10



**Figure 11 . Riko The Series movie “Early Prayer of Time” minutes – 03.12**

In the picture, Riko's father is giving Riko advice and explanations to always pray diligently at the beginning of time. The values that can be taken in this scene are religious values. This can also be seen from the conversation between father and Riko. But if you like to delay or even don't pray, Allah will be angry, you know, and you can go to hell. Naudzubillahimindzalik", this sentence shows that there is a religious character when Father explains and there are sentences "Insyallah" and "Naudzubillahimindzalik".

k. Scene 11



**Gambar 12 . Tayangan film Riko The Series “Sholat Awal Waktu” menit ke – 03.30**

Pada adegan tersebut Riko bertanya kepada Ayah tentang perbedaan surga dan neraka , hal tersebut mengandung nilai karakter rasa Ingin tahu, karena Riko selalu berusaha mengeksplorasi sesuatu yang sangat ingin ia pelajari .

l. Scene 12



**Figure 13 . Riko The Series movie “Early Prayer of Time” minutes – 03.41**

In that scene, the father explains the difference between heaven and hell in

sentences that are easily understood by a child Riko's age. The character value that can be taken in the scene is the Religious character value. The sentence his father conveyed was as follows: "Well, there's a lot of fire in hell, Riko. Oh God it's hot. It's really extraordinary. Those who do not want to obey and comply with God's rules, will later be placed in hell. Naudzubillahimindzalik . Meanwhile in Heaven, it's the other way around son. the place is comfortable, cool and in heaven everything we want can be available. and we won't be bored." The sentence "Naudzubillahimindzalik" is also a sentence that shows a religious character which means always asking God for protection from bad things.

m. Scene 13



**Figure 14 . Screening of the film Riko The Series “Early Prayer of Time” minute – 04.53**

In that scene, Riko asked Dad again about whether heaven would get a toothache later. It contains the character value of curiosity, because Riko is always trying to explore something that he really wants to learn so he wants to know if in heaven he can feel pain.

n. Scene 14



**Figure 15 . Riko The Series movie “Early Prayer of Time” minutes – 04.59**

In that scene, Riko's father explained to Riko as follows "In heaven, no one is sick, son. You don't need to go to the doctor like daddy. All God willing healthy. " , the sentence "Insyallah" which means if Allah permits is a form of Religious Value because in every word the Father always accompanies Allah.

o. Scene 15



**Figure 16 . Screening of the film Riko The Series “Early Prayer of Time” minute – 05.11**

In this scene, father again reminds Riko to pray at the beginning of time and always pray for his parents and younger siblings after the prayer. The character values that can be taken in the scene are Religious Character Values because they remind us to be obedient in carrying out the teachings of our religion and not forget to always pray for both parents.

p. Scene 16



**Figure 17 . Screening of the film Riko The Series “Early Prayer of Time” minute – 05.39**

In this scene, the father agrees to the prayers of Q110 and Riko so that everyone can go to heaven, this scene shows the value of religious character.

q. Scene 17



**Figure 18 . Screening of the film Riko The Series “Early Prayer of Time” minute – 05.42**

In this scene, the sound of the call to prayer is heard, then my father invites Riko to pray. The character values contained in the scene are religious character values because they remind us to obey Allah SWT in carrying out our obligations.

r. Scene 18



**Figure 18 . Riko The Series movie “Early Prayer of Time” minutes – 05.50**

In this scene, Riko is preparing to use a cap and sarong to pray on time. The character values contained in the scene are the character values of discipline, because they obey the rules or get used to the rules for praying on time.

s. Scene 19



**Figure 18 . Riko The Series movie “Early Prayer of Time” minutes – 05.50**

In that scene, Riko's father gave a thumbs up for getting ready to wear a sarong and cap to carry out prayers on time at the mosque. The character value contained in the scene is to appreciate achievement, because my father appreciates Riko who is ready to pray on time

t. Scene 20



**Figure 18 . Riko The Series movie “Early Prayer of Time” minute – 06.01**

In this scene, Riko's father and father are getting ready to go to the mosque to perform the midday prayer in congregation. The character values contained in the scene are religious and responsible, because Father and Riko carry out orders to worship Allah SWT and as a

man are responsible for performing congregational prayers at the mosque.

#### Discussion

Based on the 18 character education values set by the Ministry of Education and Culture, 20 pieces of data were found. Of the 20 pieces of research data there were religious character values found as many as 10 data, curiosity 4 data, respect for achievement 2 data, responsibility 2 data, creativity 1 data, and discipline 1 data. There are 10 characters that often appear in the animated film Riko The Series. The data will be discussed in detail as follows:

##### a. The Value of Religious Characters in Riko The Series Episode "Salat Early Time"

Religious character values in the animated film Riko The Series are found at minutes 02.05, 02.29, 02.30, 02.59, 03.12, 03.41, 04.59, 05.11, 05.42, and 06.01 there are many scenes of the importance of the five daily prayers and many saying sentences such as "InsyaAllah", "Naudzubillahimindza like".

The five daily prayer services are a form of devotion from the servant to His Lord by obeying all of His rules which are meant to hope for His pleasure. Worship is the main key in carrying out religious orders, in Islam Prayer is the pillar of religion (Afni & Taja, 2022)

Religious means devoting all attention to acting based on obedience to religious teachings or fulfillment of obligations sincerely and sincerely (Badry & Rahman, 2021). Religious value is a very important value in human life (Kurniawan, Ysh, & Artharina, 2021)

The religious values contained in the film Riko The Series tell us to always carry out the Prayer at the Beginning of Time because it has many rewards for those who do it. On the other hand, those who delay the prayer time will of course be rewarded by Allah SWT. Submission of explanations is explained in a simple way so that it makes it easier for children to better understand and apply it in everyday life.

##### a. The Character Value of Curiosity in Riko The Series Film "Early Prayer of Time"

The character value of curiosity in this film is at 01.11, 02.40, 03.30 minutes. as well as 04.53. Riko is a character who has a great curiosity, so several times Riko asks about something he doesn't understand and wants to know a more in-depth explanation of something.

In the film Riko The Series, Riko asks about the cause of the loud sound he hears from inside the tin, the consequences of procrastinating prayers, the difference between heaven and hell and whether heaven can feel pain.

Curiosity is a way of attitude and action that reflects curiosity and curiosity about everything that is seen, heard, and studied in depth. One of the characteristics of curiosity is asking questions (Citra Ningrum, Fajriyah, & Budiman, 2019)

##### a. Character Value Appreciating Achievement in Riko The Series Film "Early Prayer of Time"

The character values for the achievements in this film are found in the 01.04 and 05.05 minutes. Appreciating achievement is an attitude or behavior that encourages him to produce something for others and recognizes and respects the success of others (Kemendiknas, 2011)

In the film Riko The Series, the value of character respecting achievement is demonstrated by Riko praising himself and Q110 for successfully making toys from used cans and when Riko's father praises Riko for preparing to perform the midday prayer at the mosque in congregation.

This can be applied in everyday life - when friends or other people around us achieve success, we must appreciate it and give appreciation to them, for example giving applause to others when they become winners in a championship announcement.

##### a. The Character Value of Responsibility in Riko's The Series Film "Early Prayer of Time"

The value of the character of responsibility contained in this film is at 02.21 and 06.01 minutes. Responsibility is the action and attitude of a person to carry out the duties and obligations that he

should have done towards himself, the community, the environment, the country and God Almighty. (Kemendiknas, 2011)

In the film Riko The Series, the value of the character of responsibility is shown by Riko's obligation to perform the religious obligation of prayer on time to God Almighty.

a. Appreciating Creativity in Riko's The Series "Early Prayer of Time"

The value of the creative character in this film is at minute 01.02, when Riko and Q110 succeed in making toy telephones from used goods or from used cans so that Riko and Q110 also make use of unused items into useful items.

Creative is a way of thinking and doing something that produces a new way or result from what you already have (Kemendiknas, 2011)

a. Appreciating Discipline in Riko's The Series Film "Early Prayer Time"

The character value of discipline contained in this film is found at 05.50 minutes, when Riko is ready to carry out his prayers on time, this shows that Riko has learned to be disciplined in praying early on time.

Discipline is an act that shows orderly behavior and obeys various rules and regulations (Kemendiknas, 2011) .

In the film Riko teaches to be disciplined in time besides praying on time it can also be applied in daily life to go to school on time, collect assignments on time and attend other activities on time.

In education, this film can contribute in conveying character education, these reasons include:

1) This film has a very interesting story as well as explanations that are easily understood by children, especially elementary school-age children, so that it can make it easier for students to imitate and apply it to everyday life.

2) This film contains a lot of moral messages and polite language, especially related to religious values so that it can be a good role model for students.

3) Riko's character is a person who has great curiosity and is also one of the values in character education, namely the value of the character of curiosity.

4) Having the main character who is 8 years old and likes to imitate is a characteristic that is the same as elementary school-age children, especially in grade 2 elementary school students, making this film good for children to watch.

#### 4. CONCLUSION

Based on the results of the research discussion, it was concluded that the character values contained in the animated film Riko The Series were based on the character indicators contained in the Guidelines for Implementation of Character Education, which showed that the Riko The Series film contained various character values. Religious characters are characters that often appear in the animated film Riko The Series. This also shows that the animated film Riko The Series can be a medium for educational viewing for students and can also be used as a medium of learning that is rich in religious values and can be applied in lower grade elementary schools, especially in learning Islamic religious education.

#### 4. Acknowledgments

Praise goes to God Almighty for all the grace and guidance so that the writer can complete the preparation of this research. This research process received a lot of help from various parties. Therefore the author expresses many thanks to the parties involved in the process of writing this article.

#### 5. REFERENCES

- Afni, M. N., & Taja, N. (2022). *Nilai-Nilai Pendidikan Karakter Religius dalam Film Omar dan Hana*. 57–64.
- Aida, S. (2018). Meningkatkan Keterampilan Membaca Awal Melalui Metode Struktural Analitik Sintetik Dengan Menggunakan Media Audio Visual. *Journal Ilmiah Potensia*, 3, 56–63.
- Asmawati.L. (2020). Peran Orang Tua dalam Penggunaan Film Animasi Islami untuk Pembelajaran Anak Usia Dini. *Seminar Nasional Pendidikan FKIP*, 216–223.

- Badry, I. M. S., & Rahman, R. (2021). Upaya Guru Pendidikan Agama Islam dalam Menanamkan Nilai Karakter Religius. *An-Nuha*, 1(4), 573–583. <https://doi.org/10.24036/annuha.v1i4.135>
- Citra Ningrum, C. H., Fajriyah, K., & Budiman, M. A. (2019). Pembentukan Karakter Rasa Ingin Tahu Melalui Kegiatan Literasi. *Indonesian Values and Character Education Journal*, 2(2), 69. <https://doi.org/10.23887/ivcej.v2i2.19436>
- Kemendiknas. (2011). *Pedoman Pelaksanaan Pendidikan Karakter*. Jakarta: Kurikulum Perbukuan.
- Kurniawan, M. A., Ysh, A. . S., & Artharina, F. P. (2021). PENERAPAN NILAI - NILAI RELIGIUS DALAM PEMBENTUKAN KARAKTER DI SDN JAMBEAN 01 PATI. *Dwjaloka Jurnal Pendidikan & Dasar Menengah*, 2(2), 197–204.
- Putry, R. (2018). NILAI PENDIDIKAN KARAKTER ANAK DI SEKOLAH PERSPEKTIF KEMENDIKNAS. *Gender Equility : Internasional Journal of Child and Gender Studies*, 4 (1), 39–54.
- Rahmayanti, R. D., Yarno, Y., & Hermoyo, R. P. (2021). Pendidikan karakter dalam film animasi Riko The Series produksi garis sepuluh. *KEMBARA Journal of Scientific Language Literature and Teaching*, 7(1), 157–172. <https://doi.org/10.22219/kembara.v7i1.15139>
- Rahmayanti, W., Hariandi, A., & Wati, N. (2020). Moral Analysis in the Animated Films of Nusa Rara and Upin Ipin As Educational Shows. *AL-ISHLAH: Jurnal Pendidikan*, 12(2), 465–480. <https://doi.org/10.35445/alishlah.v12i2.220>
- Sari, R. W., & Nugroho, A. S. (2022). ANALISIS NILAI TOLERANSI PADA SERIAL ANIMASI FILM NUSSA DAN RARA UNTUK SISWA SEKOLAH DASAR. *COLLASE : Creative of Learning Students Elementary Education*, 5 (4), 634–644.
- Sugiyono. (2013). *Metode Penelitian Kuantitatif , Kualitatif dan R & D*. Bandung: Penerbit Alfabeta.
- Wulandari, S., & Kusmarwanti. (2022). Pesan Kritik Sosial dalam Film Sejuta Sayang. *Cinematology : Journal Anthology of Film and Television Studies*, 2 (1), 1–14.